



SONOMA
Bach
ROBERT WORTH, MUSIC DIRECTOR

2015-2016 SEASON

**Celebrating the
Sonoma Bach Choir's
25th Anniversary**

**Featuring the finest
Renaissance,
Baroque, and
Classical music**





WELCOME

Sonoma Bach's 2015-2016 season marks the 25th anniversary of the Sonoma Bach Choir, an ensemble founded by Music Director Robert Worth under the auspices of Sonoma State University.

Five years ago, the group became independent of SSU, finding a perfect new home in Sonoma Bach, with its mission to build a community of music-lovers to share the exciting experience of early music in Sonoma County.

Concertgoers and performers alike were delighted with last seasons' concerts in the stunning new Schroeder Hall at the Green Music Center. Audience comments included "Uplifting, inspiring, and encouraging...*Song of the Morning Star* was beautifully conceived and presented" and "This concert should be in the programming hall of fame!"

From rediscovering old favorites to exploring rarely performed pieces, we will be celebrating the Bach Choir's 25th anniversary all season long, and we warmly invite you to join us.

SUNDAY, OCTOBER 18, 7PM

SCHROEDER HALL

OPENING RECITAL

Monteverdi and His Milieu

Lindsey McLennan Burdick, soprano and **Christopher Fritzsche**, countertenor
Sonoma Bach Consort and **Live Oak Baroque Orchestra**

Directed by **Elizabeth Blumenstock** and **Robert Worth**

BachGrounder lecture/demonstration 35 minutes before concert

A duo of acclaimed soloists and two small ensembles perform virtuosic vocal and instrumental music from early 17th century northern Italy, including selections from Giovanni Paolo Cima's *Concerti Ecclesiastici*, Monteverdi's *Selva Morale* and *Madrigali Guerrieri ed Amorososi*, and stunning instrumental works by Tarquinio Merula and Salamone Rossi.



Maurice Prendergast, *Assisi*, 1899.





Giovanni Battista Tiepolo, *The Gathering of the Manna*, 1742.

MAJOR WORKS SERIES

FRI, NOV 20, 8PM, ST. ANDREW

SUN, NOV 22, 7PM, ST. VINCENT

Mozart Requiem: The Story of a Masterwork

Sonoma Bach Choir and **Live Oak Baroque Orchestra**

Directed by **Robert Worth**

Elizabeth Blumenstock, concertmaster

BachGrounder lecture/demonstration 35 minutes before each concert

When Mozart died at age 35, he left his *Requiem Mass* very much unfinished. The story of how the “torso” of this work became one of the most beloved classical masterpieces is one of the great tales of music history. Our *BachGrounder* will explore the compositional history of the Requiem; the concert will present, first, the work exactly as Mozart left it, and then as it is known to the world, as completed by Mozart’s student Franz Xavier Süssmayr.

FRIDAY, DECEMBER 11, 8PM

SATURDAY, DECEMBER 12, 8PM

SCHROEDER HALL

EARLY MUSIC CHRISTMAS

In Sweetest Joy

Charles Rus, organ and **Steve Escher**, cornetto
Circa 1600

Directed by **Robert Worth**

*BachGrounder lecture/demonstration 35 minutes
before each concert*

Our fifth annual Early Music Christmas is built around the ancient hymn of joy *In dulci jubilo*. This hymn illuminates the themes of the season, around which we have gathered an array of vocal pieces by Italian, German, and English composers — including Gabrieli, Schütz, Praetorius, Byrd, and Bach — along with works featuring the magical sound of the cornetto, plus solo works on Schroeder Hall's magnificent Brombaugh organ. Don't miss this festive celebration of the season!



Gentile da Fabriano, *Adorazione Dei Magi*, 1423.





Samuel Palmer, *A Dream in the Apennines*, 1864.

MIDWINTER CONCERT

FRIDAY, JANUARY 8, 8PM • SCHROEDER HALL

Giants of the High Baroque: Bach and Vivaldi

Live Oak Baroque Orchestra • Directed by **Elizabeth Blumenstock**

BachGrounder lecture/demonstration 35 minutes before concert

Live Oak Baroque Orchestra completes its four-year Vivaldi project with the *Autumn* concerto from *Four Seasons* featuring Elizabeth Blumenstock as the violin soloist; as well as her reconstruction of a lost Bach violin concerto, which survives in Bach's hand only as an arrangement for harpsichord.

GUEST CONCERT

SUNDAY, MARCH 20, 3PM • SCHROEDER HALL

Dancing in the Isles

Musica Pacifica

BachGrounder lecture/demonstration 35 minutes before concert

Featuring rousing Baroque folk and dance music from Scotland, Ireland, and England, Musica Pacifica's arrangements include traditional folk tunes; theater dance suites; Jacobean masque music; trio sonatas by Scots Oswald and McGibbon; and more. Your foot will tap, your finger will snap, and perhaps you'll want to get up and cut a caper or two!



SATURDAY, APRIL 16, 8PM

SUNDAY, APRIL 17, 3PM

ST. SERAPHIM

SACRED REALMS

Song of Songs



“The gorgeous church with the candlelight... was a holy experience for me. I felt transported into a sacred realm.”

Green Mountain Singers Sonoma Bach Consort

*BachGrounder lecture/demonstration
35 minutes before each concert*

Following last season's transcendent *Angels Everywhere* program, our one-on-a-part Sonoma Bach Consort will again join forces with the Green Mountain Singers, singing exquisite late Medieval, Renaissance, and early Baroque settings from the *Song of Songs*. This pair of concerts will take place in the visually and acoustically stunning Church of St. Seraphim, with readings from Ariel and Chana Bloch's strikingly beautiful translation of the *Song of Songs*.

Jan van Eyck, *Group of Women* (detail), 1432.





Ernst Haeckel, *Kunstformen der Natur*, *Hummingbirds*, 1904.

SATURDAY, MAY 7, 8PM
PENN GROVE CLUBHOUSE

SUNDAY, MAY 8, 3PM
SATURDAY AFTERNOON CLUB

EARLY MUSIC UNCORKED

On the Wing

Circa 1600

Directed by **Robert Worth**

BachGrounder lecture/demonstration 35 minutes before each concert

Join us for a fun program exploring a fascinating range of poetry and music depicting birds, angels, and other flying objects. To “break the surly bonds of earth” has always been a human obsession, and early-music composers loved to set flight to music. Featuring secular and sacred works by Monteverdi, Gibbons, Byrd, and many others.

FRIDAY, MAY 20, 8PM

SUNDAY, MAY 22, 7PM

SCHROEDER HALL

VOICES AND PIPES

Hearts Aflame

“It was a joy to come to that lovely Schroeder Hall... to hear the sound of both the organ, which is wonderful, and the choir, which has always been inspiring but sounded especially fine in that space.”

Charles Rus, organ

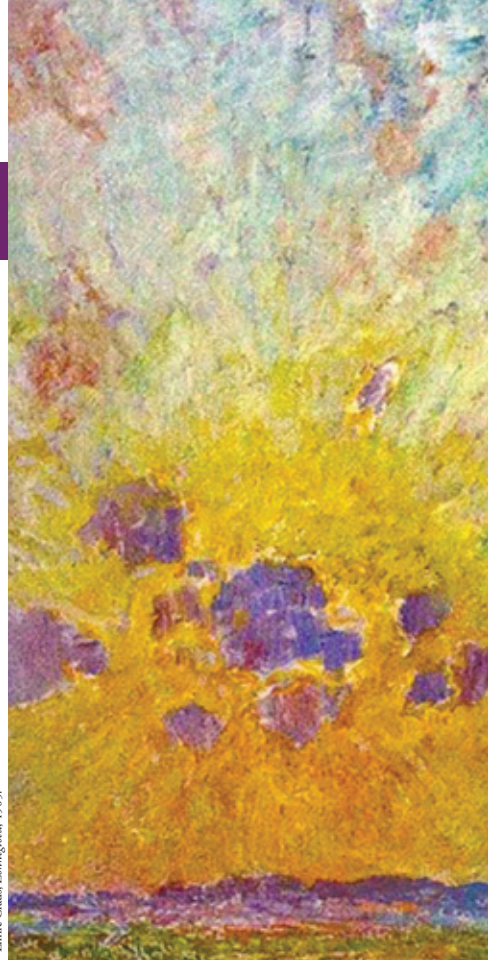
Sonoma Bach Choir

Directed by **Robert Worth**

BachGrounder lecture/demonstration

35 minutes before each concert

For our final concert of the season, we present music inspired by Martin Luther’s great Pentecost hymn *Komm heiliger Geist*. From the earliest version published in 1524, to pieces by JS Bach, hymn settings are interspersed with cantatas, motets, and organ works on the power of Spirit to ignite us to word and deed.



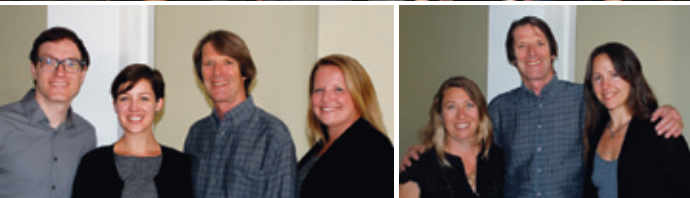
ENSEMBLES



The **SONOMA BACH CHOIR** specializes in the music of the High Baroque. Founded in 1991, the group has performed many of Bach's masterworks, including the *Mass in B Minor*, the *Christmas Oratorio*, and the *St. John* and *St. Matthew Passions*, as well as pieces by Handel, Mozart, Monteverdi, Schütz, Gabrieli and many others. In twenty years of collaborating with the Santa Rosa Symphony, they have also performed works by Verdi, Brahms, Britten, Stravinsky, and Michael Tippett.



CIRCA 1600 is our chamber chorus, focused upon the nexus between the Renaissance and the Baroque. The group's primary repertoire is drawn from the 16th and 17th centuries, with occasional forays backward to the 15th century and forward up to and including J.S. Bach. Guiding lights include Josquin Desprez, Claudio Monteverdi, and Heinrich Schütz.



The **SONOMA BACH CONSORT** and **THE GREEN MOUNTAIN SINGERS** were founded in 2013 as one-on-a-part ensembles specializing in early music. The groups premiered in Sonoma Bach's concert series in April 2014.



LIVE OAK BAROQUE ORCHESTRA is Sonoma Bach's period-instrument ensemble. Led by Baroque violin sensation Elizabeth Blumenstock, LOBO brings sumptuous tone and breathtaking flair to the one-on-a-part repertoire of the 17th century. Experience Baroque music at its finest — passionately performed by some of the country's finest period instrumentalists.

TO PURCHASE TICKETS:

Visit our website at www.sonomabach.org
or call (877) 914-2224.

Season Pass to all 8 concerts:

25% discount over individual tickets!

General Admission: \$150

Student Admission: \$90

Build-Your-Own Ticket Package:

Order tickets to 3 or more concerts and
save 15% over individual ticket prices!

(Excludes Santa Rosa Symphony concert)

Single Tickets:

General Admission: \$25

Student Admission: \$15

SANTA ROSA SYMPHONY: JOY TO THE WORLD

The final concert in a twenty-year collaboration: the Bach Choir, as part of the Santa Rosa Symphony Honor Choir, performs Beethoven's magnificent Ninth Symphony. Bruno Ferrandis, conductor. Purchase tickets for Santa Rosa Symphony's concert at www.santarosasympphony.com

Saturday, December 5, 2 PM (Discovery Open Rehearsal) & 8 PM,

Sunday, December 6, 3 PM, and Monday, December 7, 8 PM

Weill Hall

25TH ANNIVERSARY FUNDRAISER

Please join us in celebrating our 25th season at "Bachtobberfest"! Enjoy performances by Sonoma Bach musicians, German-style food, and Lagunitas beers on tap. All proceeds benefit Sonoma Bach.

Tuesday, October 6, 5:30–8:30 PM

Lagunitas Beer Sanctuary, 1280 N McDowell Blvd, Petaluma

SUPPORT SONOMA BACH

Ticket sales account for less than half of the cost of Sonoma Bach's concerts. Please consider a tax-deductible donation with your ticket order: Your contribution also helps to subsidize student tickets.

LEARNING & EXPLORATION

Intimate, informal, and interactive, our educational programs for all ages and backgrounds include well-loved vocal workshops *Ready Set Sing!*, *Exploratorium*, and perennial favorite *Midsummer Night Sings*, your chance to sing great choral masterworks with notable conductors from the Bay Area. Fall and Spring *Bach Talks* give deeper insight into the music we sing. And don't miss our *BachGrounders*: 35 minutes prior to each concert in our regular concert series, these lecture demonstrations focus on music, instruments, and interpretation.

CONCERT LOCATIONS

Schroeder Hall & Weill Hall

Green Music Center, Sonoma State
University, 1801 E Cotati Ave, Rohnert Park

St. Seraphim of Sarov Orthodox Church

90 Mountain View Ave, Santa Rosa

St. Andrew Presbyterian Church

16290 Arnold Dr, Sonoma

St. Vincent de Paul Church

35 Liberty St, Petaluma

Saturday Afternoon Club

430 10th St, Santa Rosa

Penngrove Clubhouse

385 Woodward Ave, Penngrove

SONOMA
Bach

ROBERT WOODS, MUSIC DIRECTOR

528 B Street
Santa Rosa, CA 95401
877-914-BACH
www.sonomabach.org



GIVE VOICE TO EARLY MUSIC

Eight productions celebrating the musical glories of the Renaissance, Baroque, and Classical eras. Look inside for our exciting 2015–2016 Season!

“Thank you, again, for inviting me last evening. The experience was uplifting, inspiring and encouraging”... “SO. MUCH. FUN.”